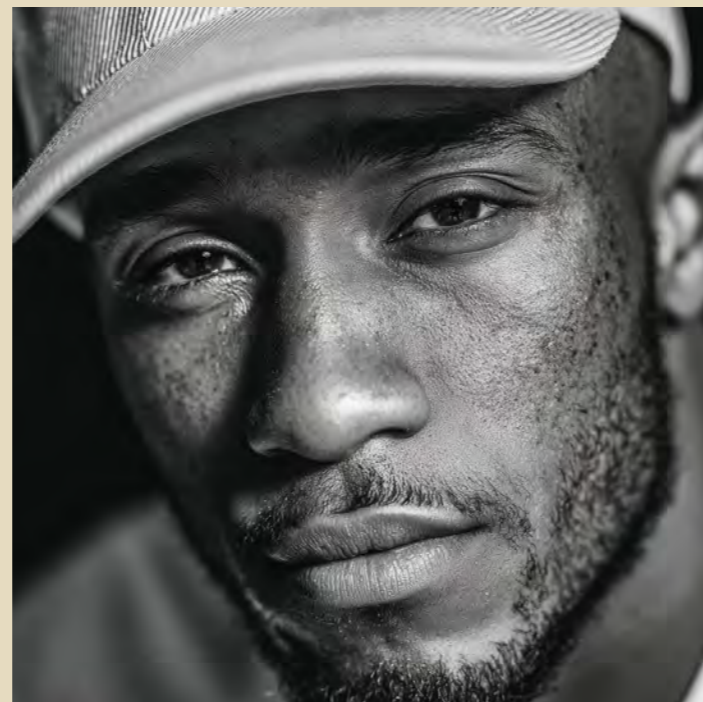
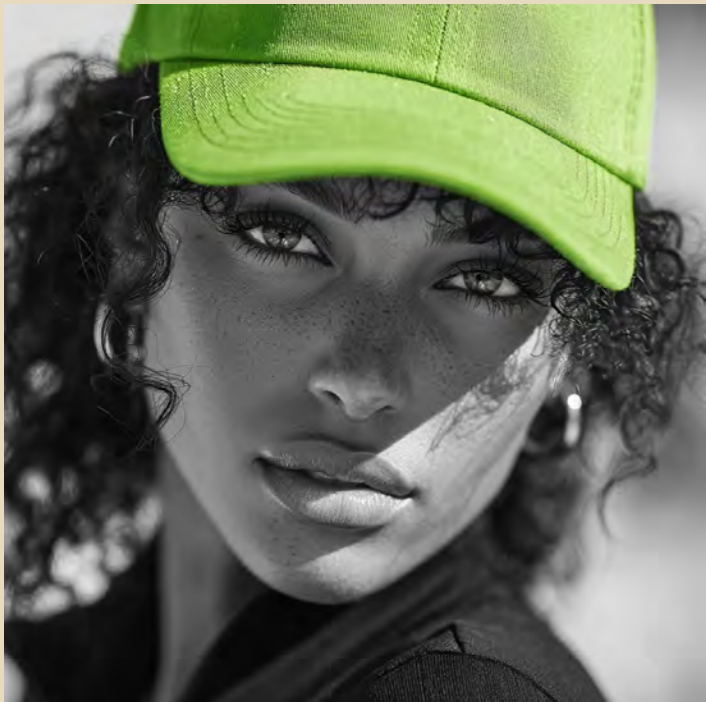




# Quick & Easy Custom Cap Service





# Custom headwear made easy like never before

Low minimums, lightning-fast delivery, highest quality standards and ultimate simplicity - we make custom headwear easy and accessible for everyone.

# How we make it happen?

1. Pick your hat style.

---
2. Select from our color options or create your own combination.

---
3. Choose your customization

---
4. Get instant pricing and delivery details

---
5. Send us your vector logo to arrange visual

---
6. Place your order and relax!

## Order Quantities

100–2000 pieces (in multiples of 100)

## Visual

ready in 24/48 hours

## Approval

only photo of decoration on cutting to be approved withing 24 hours

## Delivery Options:

- Air: 30/60 days for orders of 100+ pieces.
- Sea: 120 days for orders of 500+ pieces.

If you have any questions on our range please contact us on 07966 420895 or email [info@mj-services.co.uk](mailto:info@mj-services.co.uk)



# Products & Customization Options

## Models



STYLE 1001  
6 PANEL CAP



STYLE 1002  
5 PANEL CAP



STYLE 1003  
TRUCKER CAP

## Available Closures



HOOK&LOOP

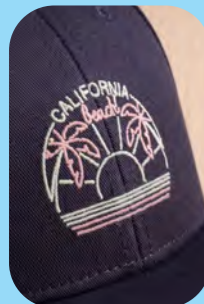


SUNDAY BUCKLE

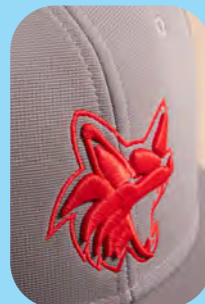


SNAP BACK

## Decoration Options



FLAT EMBROIDERY



3D EMBROIDERY



WOVEN PATCH WITH OVERLOCK OUTLINE



WOVEN FOLDABLE LABEL



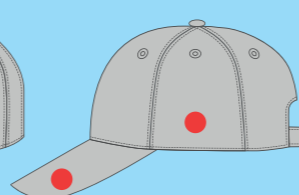
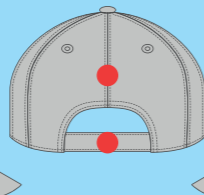
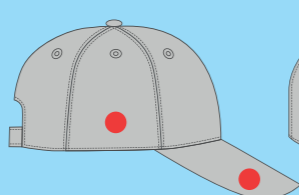
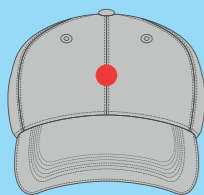
WOVEN FLAG LABEL



PRINT

## Decoration Positions

max 2 decorations per cap



# Color Options

40 colors for Chino Cotton and Mesh

|                    |                  |              |                    |                    |                 |                   |              |
|--------------------|------------------|--------------|--------------------|--------------------|-----------------|-------------------|--------------|
| WHITE              | ECRU 482C        | LT GREY 421C | GREY 436C          | STONE 4755C        | KHAKI 4253C     | DK KHAKI 4257C    | OLIVE 416C   |
| ARMY GREEN 448C    | DK GREY 425C     | PINK 203C    | DK PINK 5015C      | FUCHSIA 219C       | VIOLET 7679C    | DK NAVY 4280C     | NAVY 533C    |
| ROYAL 7686C        | DEEP ROYAL 2161C | LT AQUA 631C | AQUA 312C          | LT BLUE 3577C      | LAKE BLUE 7690C | BRIGHT RED 485C   | RED 200C     |
| CARDINAL 7420C     | BURGUNDY 7643C   | BROWN 7533C  | MUSTARD 7563C      | BRIGHT YELLOW 114C | YELLOW 2010C    | LT ORANGE 2025C   | ORANGE 172C  |
| RUSTY ORANGE 7599C | ACID GREEN 7488C | GREEN 349C   | BOTTLE GREEN 5535C | DK TEAL 2224C      | BLACK           | HEATHER GREY 422C | HEATHER GREY |

## 13 colors for Recycled Polyester

|               |                    |             |             |             |             |             |          |
|---------------|--------------------|-------------|-------------|-------------|-------------|-------------|----------|
| WHITE         | GREY 422C          | KHAKI 4250C | OLIVE 417C  | NAVY 533C   | ROYAL 3597C | DK GREY 11C | RED 193C |
| CARDINAL 194C | BOTTLE GREEN 5535C | BLACK       | YELLOW FLUO | ORANGE FLUO |             |             |          |

If you have any questions on our range please contact us on 07966 420895 or email [info@mj-services.co.uk](mailto:info@mj-services.co.uk)



# Style 1001

• Main Fabric: 100% cotton



|                |   |
|----------------|---|
| TECH SPECS:    | 5 or 6 PANEL · STRUCTURED CAP · SELF FABRIC SWEATBAND |
| FABRIC WEIGHT: | 280 GSM   |
| CLOSURE:       | HOOK & LOOP or SUNDAY BUCKLE or SNAP BACK             |
| VISOR:         | RETRAZE® RECYCLED VISOR · CURVED                      |
| SIZE:          | ONE SIZE · 58 CM                                      |
| MADE IN:       | CHINA   |
| CUSTOM CODE:   | 65.05.00.30   |

# Color suggestions

## Solid



## Bi-color



## Tri-color



For the latest cap prices please contact us on 07966 420895 or email us your requirements to [info@mj-services.co.uk](mailto:info@mj-services.co.uk)



[www.mj-services.co.uk](http://www.mj-services.co.uk)

# Style 1002

• Main Fabric: 100% recycled polyester



|   |   |
|---|---|
| SUSTAINABLE FEATURES: RECYCLED BUCKRAM · RETRAZE® RECYCLED VISOR · IMPACT REDUCTION: -20% CO <sub>2</sub> eq* |   |
| TECH SPECS:   | 5 or 6 PANEL · STRUCTURED CAP · SELF FABRIC SWEATBAND |
| FABRIC WEIGHT:  | 200 GSM   |
| CLOSURE:  | SUNDAY BUCKLE or HOOK & LOOP or SNAP BACK             |
| VISOR:  | RETRAZE® RECYCLED VISOR · CURVED                      |
| SIZE:   | ONE SIZE · 58 CM                                      |
| MADE IN:  | CHINA   |
| CUSTOM CODE:  | 65.05.00.30   |

# Color suggestions

## Solid



## Bi-color



## Tri-color



For the latest cap prices please contact us on 07966 420895 or email us your requirements to [info@mj-services.co.uk](mailto:info@mj-services.co.uk)



[www.mj-services.co.uk](http://www.mj-services.co.uk)

# Style 1003

- Main Fabric: 100% cotton
- Side & Back: 100% polyester



|                |  |
|----------------|--|
| TECH SPECS:    | TRUCKER · STRUCTURED CAP · SELF FABRIC SWEATBAND |
| FABRIC WEIGHT: | COTTON 280 GSM                                   |
| CLOSURE:       | SNAP BACK or HOOK & LOOP                         |
| VISOR:         | RETRAZE® RECYCLED VISOR · CURVED                 |
| SIZE:          | ONE SIZE · 58 CM                                 |
| MADE IN:       | CHINA  |
| CUSTOM CODE:   | 65.05.00.30                                      |

# Color suggestions

## Solid



## Bi-color



## Tri-color



For the latest cap prices please contact us on 07966 420895 or email us your requirements to [info@mj-services.co.uk](mailto:info@mj-services.co.uk)



[www.mj-services.co.uk](http://www.mj-services.co.uk)

# Custom Made team answers your questions.



07966 420895  
[info@mj-services.co.uk](mailto:info@mj-services.co.uk)  
[www.mj-services.co.uk](http://www.mj-services.co.uk)

